

**KEY MESSAGE**

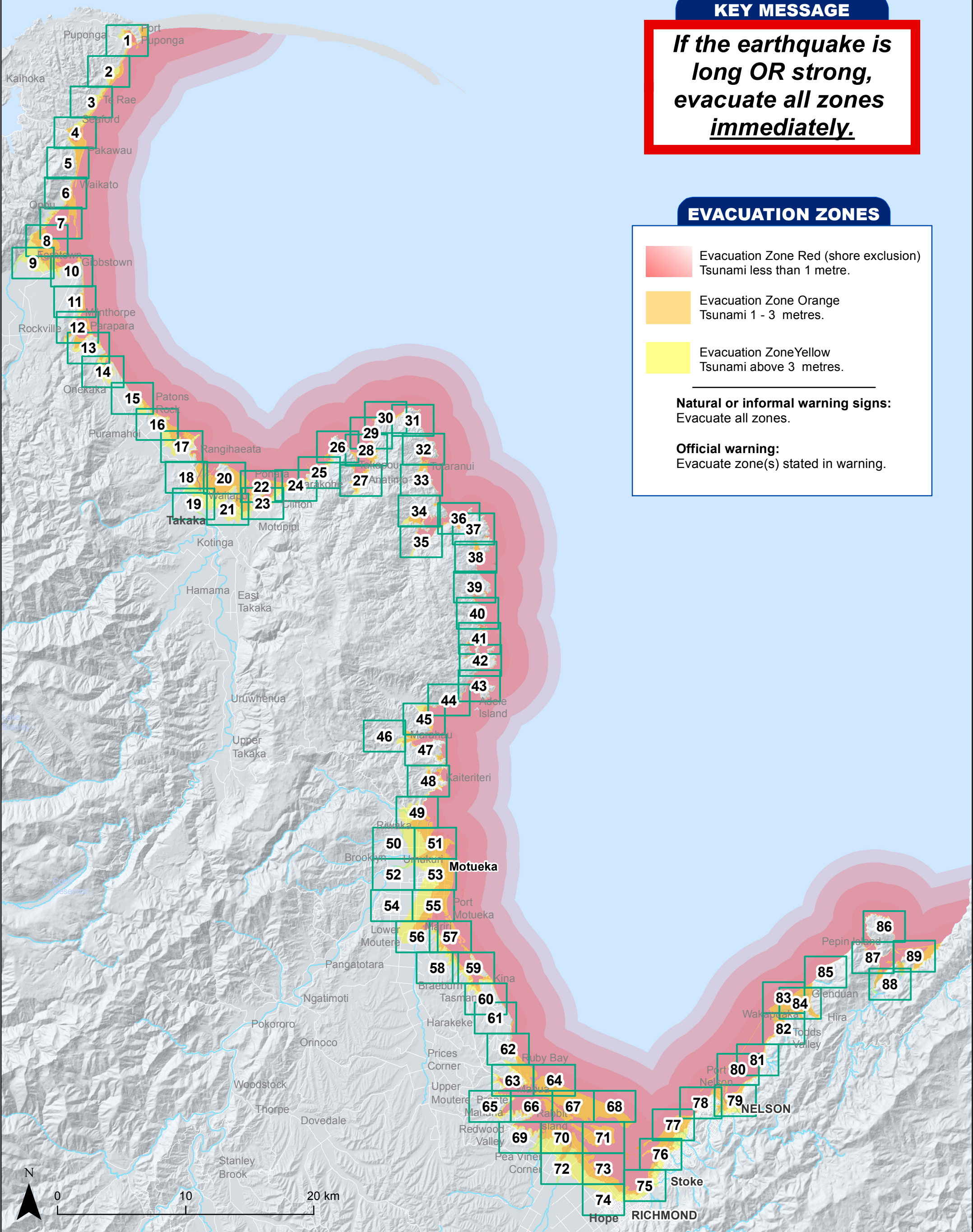
***If the earthquake is long OR strong, evacuate all zones immediately.***

**EVACUATION ZONES**

- Evacuation Zone Red (shore exclusion)  
Tsunami less than 1 metre.
- Evacuation Zone Orange  
Tsunami 1 - 3 metres.
- Evacuation Zone Yellow  
Tsunami above 3 metres.

**Natural or informal warning signs:**  
Evacuate all zones.

**Official warning:**  
Evacuate zone(s) stated in warning.



**Tsunami Evacuation Zones**



**NELSON TASMAN  
EMERGENCY MANAGEMENT**

**GROUP**